

### Prestained Protein Ladder (10-250KDa)

**Cat. No. SL7001**      **Size:** 500 µl

**Cat. No. SL7002**      **Size:** 100 µl

- 3 µl or 5 µl per loading for clear visualization during electrophoresis on 15-well or 10-well mini-gel, respectively.
- 1.5~2.5 µl per well for general Western transferring.
- Apply more for thicker (> 1.5 mm) or larger gel.

#### Description:

The Prestained Protein Ladder is a three-color protein standard with 12 pre-stained proteins covering a wide range molecular weights from 10 to 245 KDa. Proteins are covalently coupled with a blue chromophore except for two reference bands (one green and one red band at 25 KDa and 75 KDa respectively) when separated on SDS-PAGE (Tris-Glycine buffer). The Prestained Protein Ladder is designed for monitoring protein separation during SDS-polyacrylamide gel electrophoresis, verification of Western transfer efficiency on membranes (PVDF, nylon, or nitrocellulose) and for approximating the size of proteins. The ladder is supplied in gel loading buffer and is ready to use.

#### Contents:

Approximately 0.1~0.4 mg/ml of each protein in the buffer (20 mM Trisphosphate, pH 7.5 at 25°C), 2% SDS, 1mM 2-Mercaptoethanol, 3.6 M Urea, and 15% (v/v) Glycerol).

#### Quality Control:

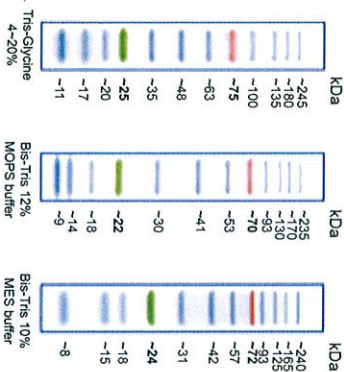
Under suggested condition Prestained Protein Ladder resolves 12 major bands in 15% SDS-PAGE (Tris-Glycine buffer) and after Western blotting to nitrocellulose membrane.

Sale Office : No. 56, Azimi St., Nafsi Ave., Phase 1, Ekbatan, Tehran, Iran

Tell : 02144666204    02144631124

#### Storage:

Stable for up to 2 weeks 25°C  
Stable for up to 3 months at 4°C. For long term storage, store at -20°C. Guide for Molecular Weight Estimation (KDa) Migration patterns of Prestained Protein Ladder in different electrophoresis conditions are listed below:



Note: The apparent molecular weight of each protein (KDa) has been determined by calibration against an unstained protein ladder in each electrophoresis condition. \* supplement data, should be considered for more accurate adjustment. All products are for research use only.

Caution: Not intended for human or animal diagnostic or therapeutic uses.