



**Tehran Cavosh Clon**  
Our Aim is Your Success  
ISO 9001 CERTIFIED  
ISO 13485 CERTIFIED

## CERTIFICATE OF ANALYSIS

**Product:** 1Kb plus DNA Ladder (Reedy- to- Use), 100-10000 bps, 500µl

**Catalog Number:** SL7052

**Lot Number:** 00705001

**Expire Date:** 12.2023

**Quantity:** 50µg

**Concentration:** 100 µg/ml

**Storage Condition:** Store at -20°C

**Shelf Life:** Stable for up to 6 months at 25°C and 12 months at 4°C. For long term storage, store at -20°C.

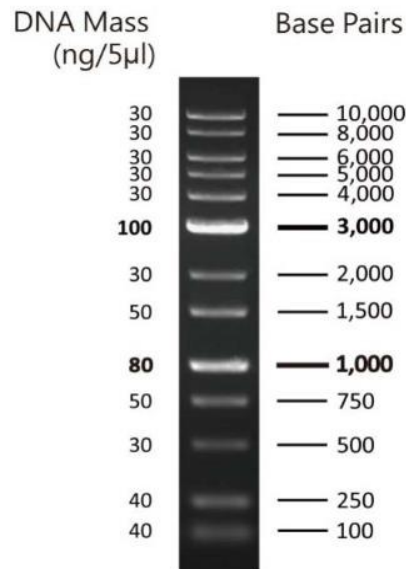
### Description:

A unique combination of PCR products and a number of proprietary plasmids digested with appropriate restriction enzymes to yield 13 fragments, suitable for use as molecular weight standards for agarose gel electrophoresis. The DNA includes fragments ranging from 100 - 10,000 base pairs. The 1K and 3K bands have increased intensity to serve as reference points. The approximate mass of DNA in each band is supplied as (0.5 µg per loading) for estimating the mass of DNA in comparably intense samples of similar size.

### Quality Control:

Under suggested condition Ladder resolves 13 major bands in gel electrophoresis.

Migration patterns of Ladder in electrophoresis condition:



1 % TAE agarose gel



**Tehran Cavosh Clon**  
Our Aim is Your Success  
ISO 9001 CERTIFIED  
ISO 13485 CERTIFIED

**Instruction for Use:**

- 1-Thaw the ladder at room temperature for a few minutes to dissolve precipitated solids. DO NOT BOIL!
- 2-Mix gently, but thoroughly, to ensure the solution is homogeneous.
- 3-Load the following volume of the ladder on a gel: 5  $\mu$ l per well for general gel.

**Note 1:** All products are for research use only.

**Note 2:** This is the signature indicates that the above material has met all quality specifications and has been reviewed by a quality department

Quality authorized by:  
Tahere Bidmeshki, M.Sc  
[qc@sinaclon.com](mailto:qc@sinaclon.com)

1400.08.09

